

If you think that you may need to use the services of Kents Hill Care Club please contact the school office for further information.

The Club offers parents a variety of sessions (full time/part time) to suit their working patterns.

Places at the Club are limited and are allocated on a first come-first served basis.



Birdlip Lane
Kents Hill
Milton Keynes
MK7 6HD

Phone: 01908 240038
Fax: 01908 240038
Email: kentshill.careclub@milton-keynes.gov.uk



What do we offer?

High quality, wrap around care for your child.

More information available on the school website.

▶ www.kentshillschool.co.uk

Phone 01908 240038

▶ Kents Hill Care Club

The aim of our club is to provide a high quality childcare service for working parents of children attending Kents Hill School.



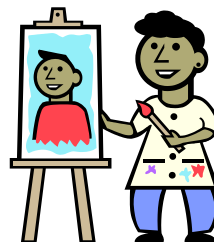
Many of the staff who work in the club are also employed by school so they are already very familiar to the children. They have also had additional training in playwork, at NVQ Level 3 or Level 2.

Our Care Club is governed by a committee of people who include parents, governors and members of staff. It is non profit making so any profits made are ploughed back into the club and the school.

The club is OFSTED registered and is a member of Milton Keynes Play Association. It has full insurance cover and staff are trained in First Aid and Safeguarding Children.

What do the children do?

A wide range of indoor and outdoor play activities are planned for the children each week. These include things such as craft activities, cooking and sewing.



How much does it cost?

From September 2011 fees for main school children are £3.70 daily for a before school session and £9 for an after school session.

Our current fees for nursery children are £3.70 for an 8:8.45am session, £11.50 for a morning or afternoon 3 hour nursery session, £2.15 for a lunchtime session and £8 for a 3:15-5:45pm session.

When does it run?

Every day in term time.



The club opens at 8am every morning and runs sessions until 5:45pm after school.



What do they eat?

Fees include breakfast and tea. Nursery children attending over lunchtime can bring a packed lunch or order (in advance) a hot meal from school. Breakfast is continental, (fruit, cereal, toast/bagel etc). A light tea (salad, sandwiches, pasta etc.) is served with fruit and a



Birdlip Lane
Kents Hill
Milton Keynes

Phone: 01908 240038
Fax: 01908 240038
Email: kentshill.careclub@milton-keynes.gov.uk